

NOVELL CLIENT 2 FOR WINDOWS :: Installation and configuration:

1. Download Novell Client 2 SP1 for Windows from either:

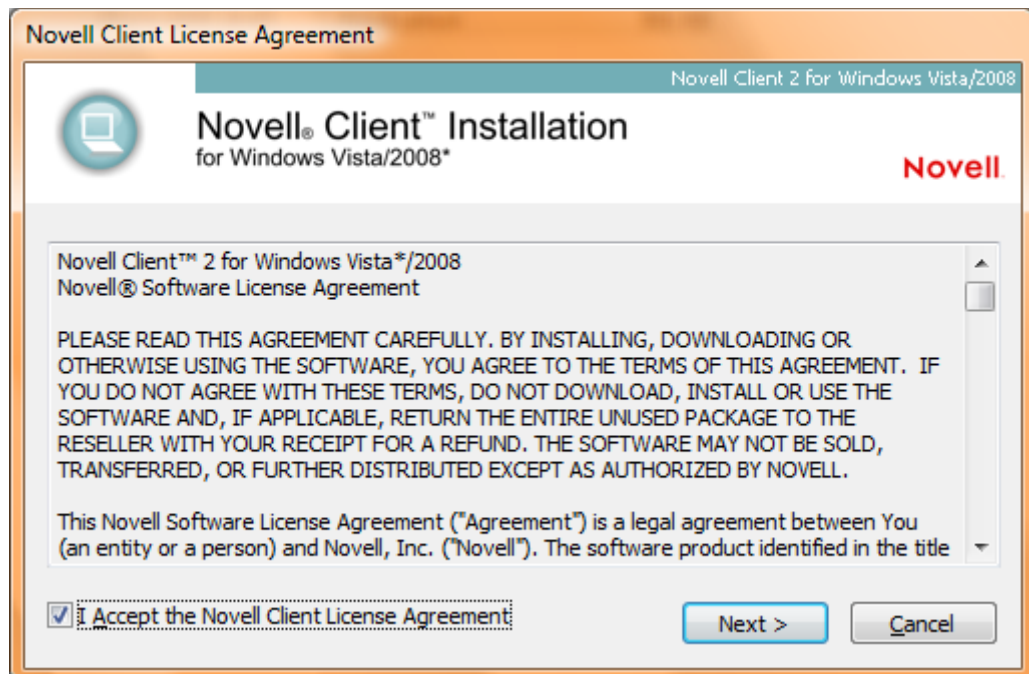
\\Qmwccss\usr\Installers\Netware Client\Novell Client 2 SP1

<http://webspaces.qmul.ac.uk/swilley> or

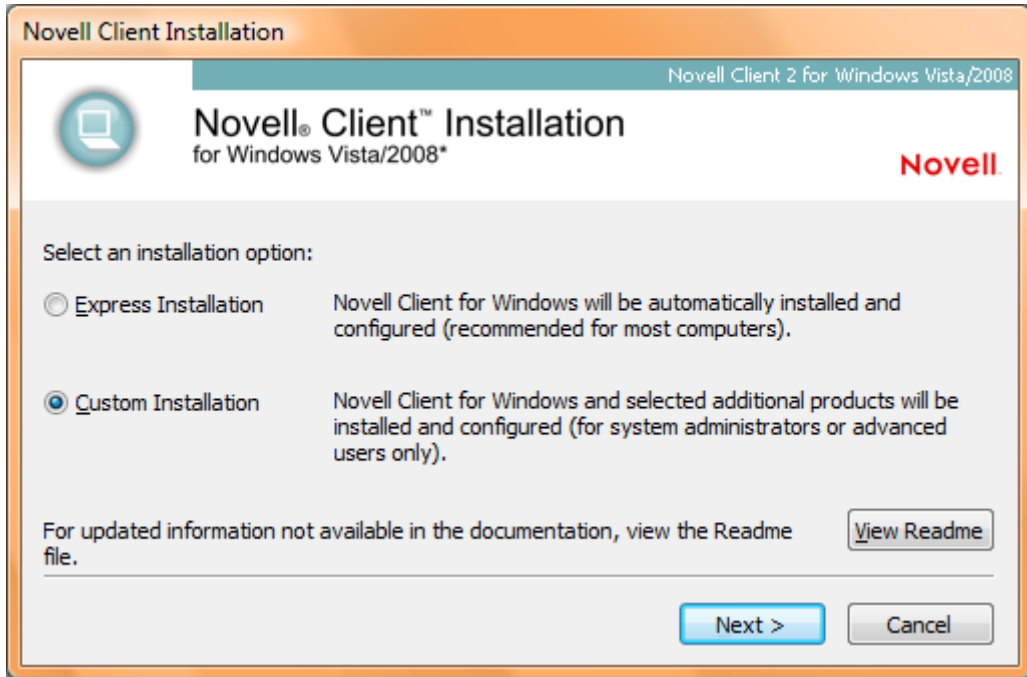
<http://download.novell.com/SummaryFree.jsp?buildid=0aOpW9QmGHc~> (Novell Website)

If you haven't registered with the Novell site previously, you will be required to do so before you can download the file.

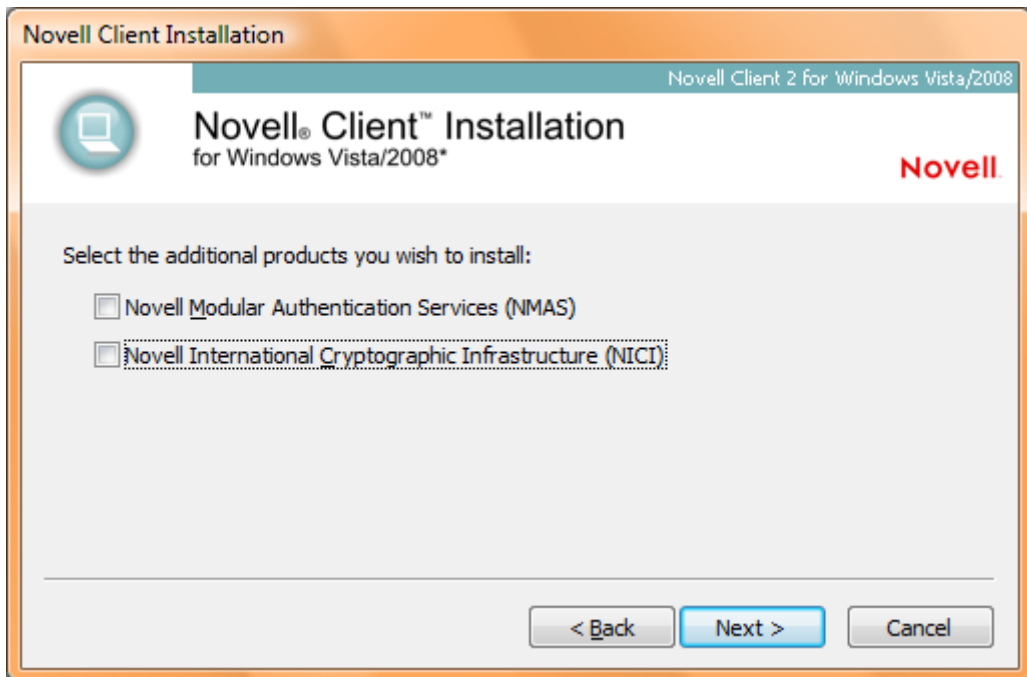
2. Download the file NWAPP32.DLL from <http://webspaces.qmul.ac.uk/swilley/nwapp32.dll> and save it in the %systemdir%\system32 (usually c:\windows\system32) folder. Please note: Windows may not allow you save the file directly into the %systemdir%\system32 folder. You may have to save the file to your Desktop or other location first and then copy it to the system32 folder.
3. **If you already have a previous version of Novell Client for Windows installed you must remove it and restart the computer via the "Programs and Features" icon in the Windows Control Panel before installing this version of the client.**
4. Once you have downloaded the client and extracted its installation files, right-click on the "Setup.exe" file and select "Run as Administrator".
5. Accept the Novel Client License terms and click "Next"



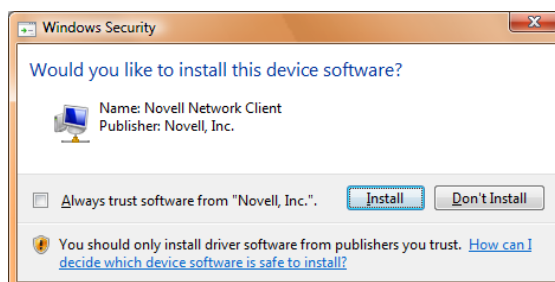
6. On the next screen select “Custom Installation” and click “Next”.



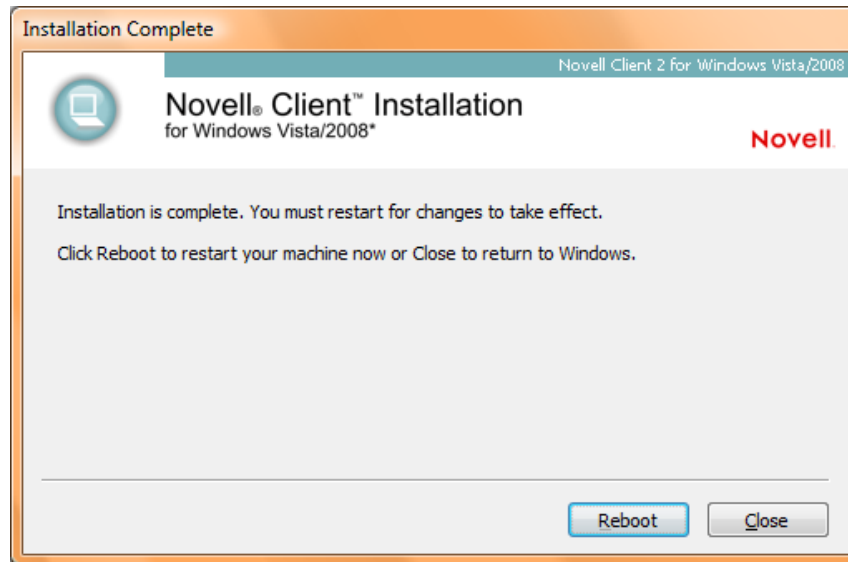
7. At the next screen, un-tick both “additional product” boxes and click “Next” and then “Install”.



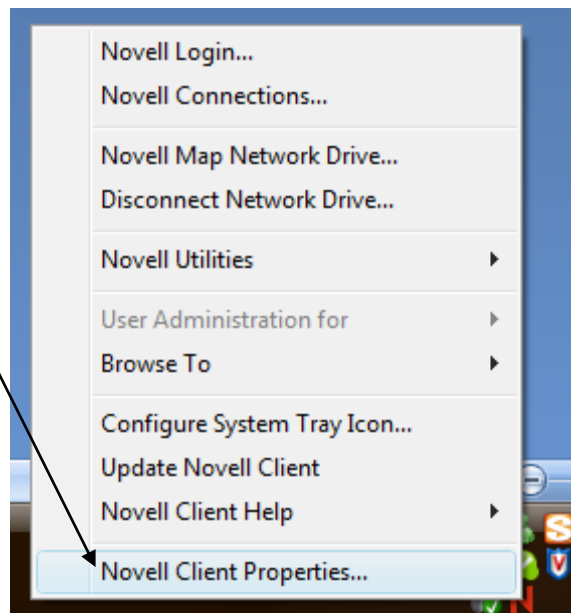
8. If you receive a “Windows Security Alert” like the one below, DON’T click the “always trust software from Novell, Inc” and click the “Install” button.



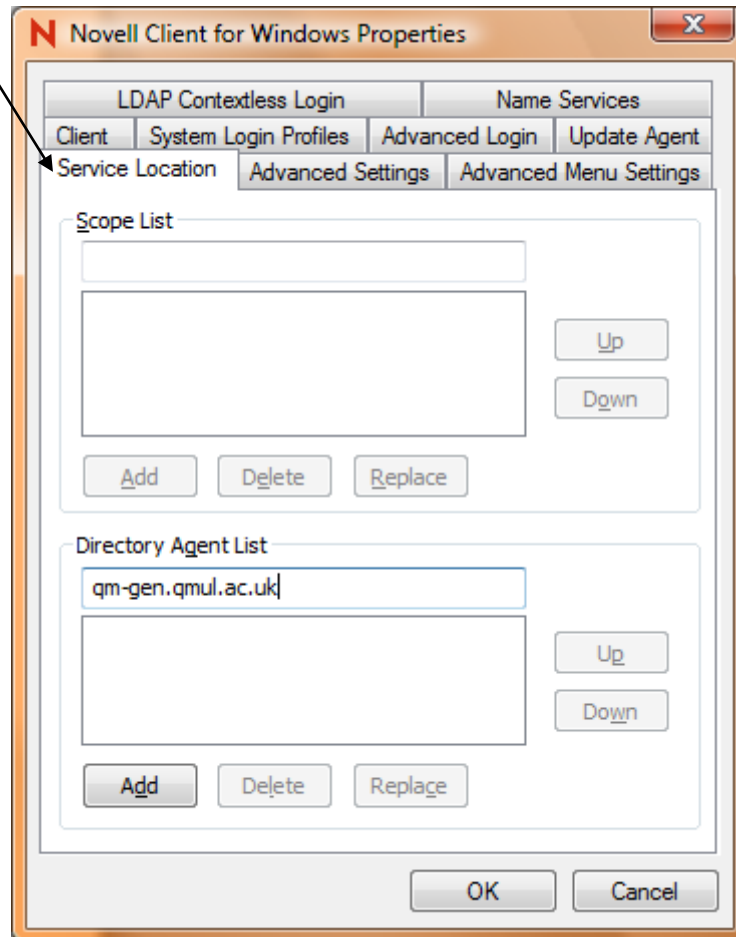
9. When the installation completes, click the “Reboot” button.



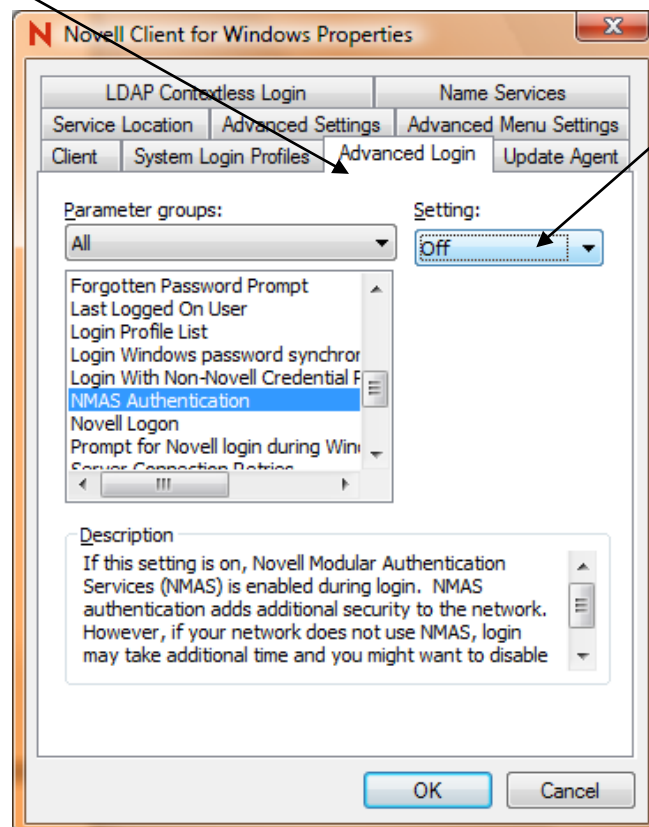
10. Once your computer has re-started, select “Computer Only Logon” and login with a local account that has Administrator privileges. Once logged in, Right-click on the red **N** icon down in the system tray and select “Novell Client Properties” from the menu.



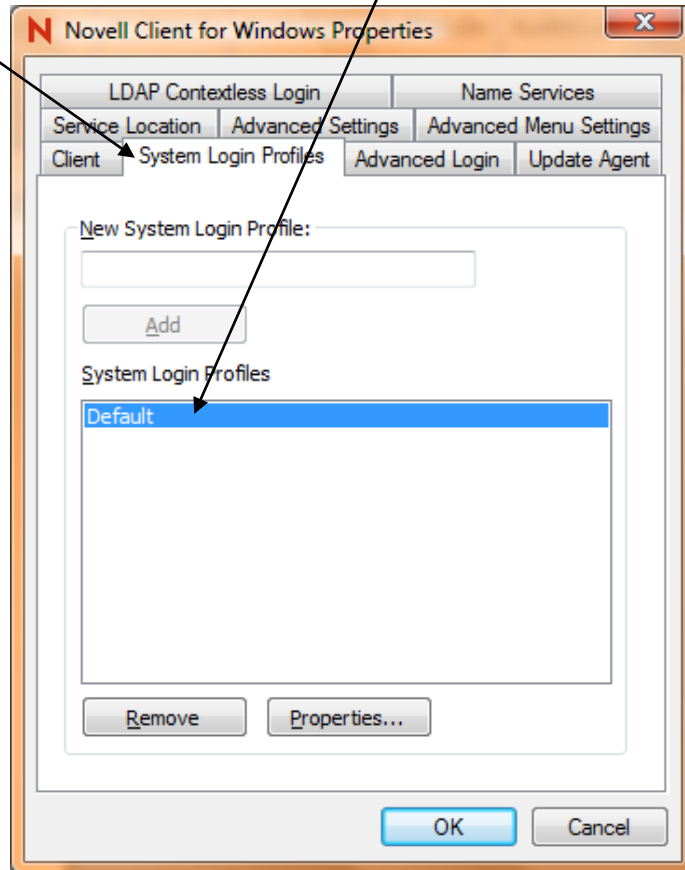
11. Select the "Service Location" tab and in the text-box below "Directory Agent List" type **qm-gen.qmul.ac.uk** and click the "Add" button.



12. Next, click on the "Advanced Login" tab and select "NMAP Authentication" from the list and change the Setting to "Off".

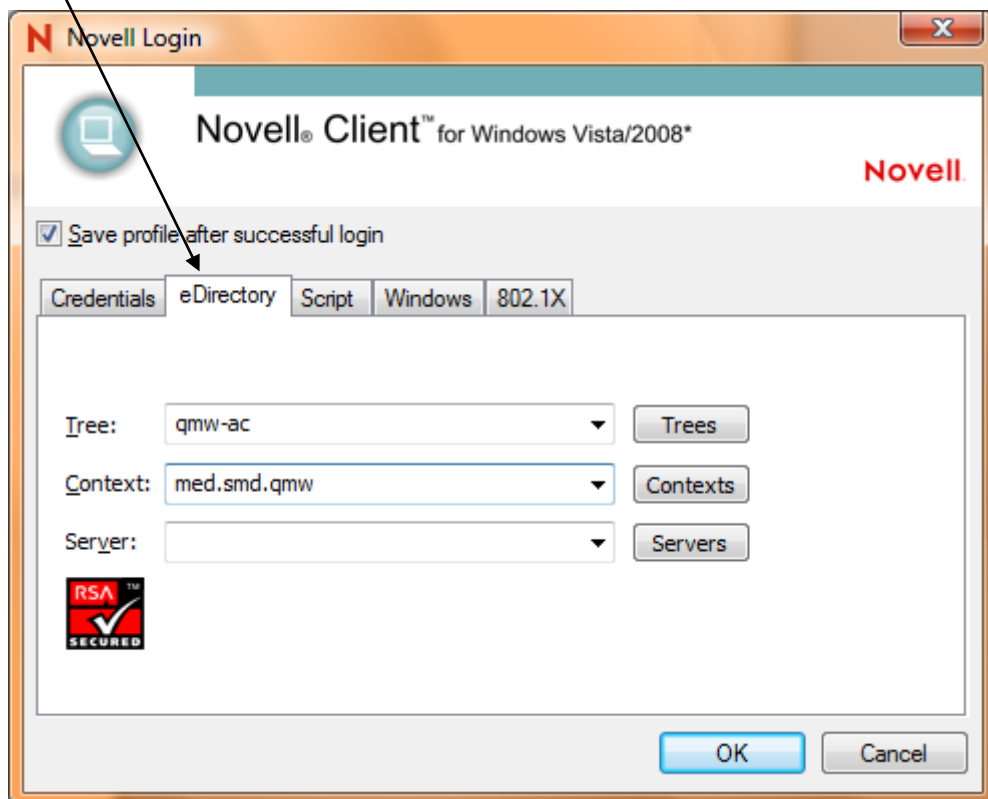


13. Click on the "System Login Profiles" tab, select the "default" profile and click the properties button.



14. On the "eDirectory" tab enter the following information as shown below:

TREE: qmw-ac
Context: med.smd.qmw



Click "OK" and then "OK" again. Restart your computer when prompted to do so.

15. At the Windows logon screen, select "NOVELL LOGON". Enter your Novell username and password and press the Enter key or click OK. The first time you logon you should get a message box appear that says "Novell Logon Succeeded. Log onto This Computer". You should then enter your Windows password.
16. On subsequent logins, if your Windows password is different to your Novell password, you will then be prompted to enter it. If you wish your Windows and Novell passwords to be the same, then click the tick box to the left of the password field.